

STAHLIN® POLYCARBONATE ENCLOSURES

POLYSTAR®, POLYSLIM™, OPERATOR INTERFACE ENCLOSURES, ELECTRICAL JUNCTION ENCLOSURES

The most innovative, durable, and reliable
polycarbonate enclosures available!



stahlin.com

STAHLIN®
A ROBROY Brand

STAHLIN POLYCARBONATE ENCLOSURES

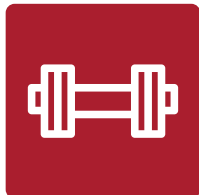
are ideally suited for:



RUGGED APPLICATIONS REQUIRING ENCLOSURE STRENGTH

Over 40% stronger than the competition*, Stahlin's thick, robust side walls eliminate flexing. Heavy-duty and durable, they are produced from a polycarbonate material formulation which provides high-impact resistance and dimensional stability. Our enclosures are popular and reliable in industrial and manufacturing applications within continuously demanding environments.

**Results of independent testing conducted with off-the-shelf competitive polycarbonate enclosures.*



APPLICATIONS WITH LIKELY NEED FOR IMPACT RESISTANCE

Metal enclosures are vulnerable to denting upon impact, which, along with aesthetic concerns, can compromise the integrity of the seal that protects everything housed within the enclosure. Although Stahlin polycarbonate has a lighter weight than other materials, it boasts a higher impact resistance.



APPLICATIONS REQUIRING CORROSION RESISTANCE

Stahlin polycarbonate enclosures are available with full non-metallic or stainless steel cover latches and full non-metallic hinges that don't penetrate the enclosure and meet NEMA Type 4X requirements, which specifies an increased level of protection from corrosion. Because of this, we meet the demands of diverse industries from oil and gas to carwashes to marine environments.



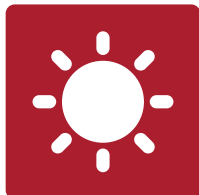
APPLICATIONS WHERE EASE OF MODIFICATION IS IMPORTANT

Stahlin polycarbonate enclosures are easy to modify using standard tools for cutting holes, windows, vents, and drains. They cut cleanly without dust and resist delamination. Our ModRight program offers value-add factory design, engineering, and modification to help customers solve demanding product application challenges.



APPLICATIONS WHERE INSTALLATION AND LABOR ARE CHALLENGES

Polycarbonate, compared with metal enclosures, is lightweight, making it easier and quicker to install; thereby being of value in overall cost reduction.



APPLICATIONS WHERE UV RESISTANCE IS IMPORTANT

Because of natural resistance to UV degradation, polycarbonate enclosures can weather the passage of time, even in harsh exterior applications. Stahlin polycarbonate enclosures carry an f1 rating for outdoor use per UL 746C.



APPLICATIONS USING WIRELESS TECHNOLOGY

Stahlin polycarbonate enclosures are ideal for protecting wireless technology because they allow wireless and radio frequency signals to pass unobstructed through the enclosure. This allows you to have antennas inside of the enclosure. Additionally, there is the option to block EMI/RFI frequencies if needed, giving you more flexibility than metal enclosures.

POLYSTAR® ENCLOSURES

Stahlin® PolyStar® Enclosures are designed to be used in a variety of outdoor or indoor applications. They provide superior protection against rain, sleet, snow, splashing water, hose-directed water, submersion, sun/UV, and flames.



Self-extinguishing, non-halogenated, and non-flame propagating, Stahlin's PolyStar Series is the most innovative, durable, and reliable polycarbonate enclosure available.

SUPERIOR PROTECTION AGAINST



**RAIN, SLEET
& SNOW**



**SPLASHING &
HOSE-DIRECTED
WATER**



SUBMERSION*



SUN/UV



FLAMES

INNOVATIONS AND FEATURES

- + One enclosure, one solution, one price! Enclosure can be configured as hinged with screw cover or hinged with latched cover
- + Fully non-metallic hinge, does not penetrate inside enclosure
- + Thick, robust side wall construction eliminates side wall flexing
- + Built-in DIN Rail mounting embosses in the back of the enclosure
- + Capability to add side panels, DIN rails, or instruments
- + Innovative PolySlim low-profile enclosures are ideal for equipment with minimal depth and for wireless communications applications
- + Sliding T-Nut allows for infinite panel adjustments, back to front
- + Latch options: Choose from fully non-metallic, stainless, or HW configuration with latches removed
- + Clear or opaque cover options
- + Multi-directional mounting feet or flange options allow mounting flexibility
- + Aluminum back panel and swing-out panel mounting options
- + Industry leading size range: 6" x 6" to 24" x 24"
- + Compatible with Stahlin SolarShield™ HMI Cover

MATERIALS AND PERFORMANCE

- + Performance: -40°F to +248°F (-40°C to +120°C)
- + UL 94 Flame Rating - 5VA (highest flame resistance)
- + UL's best rating for outdoor exposure, an "f1" per UL 746C (resin has passed tests for UV exposure and water immersion)

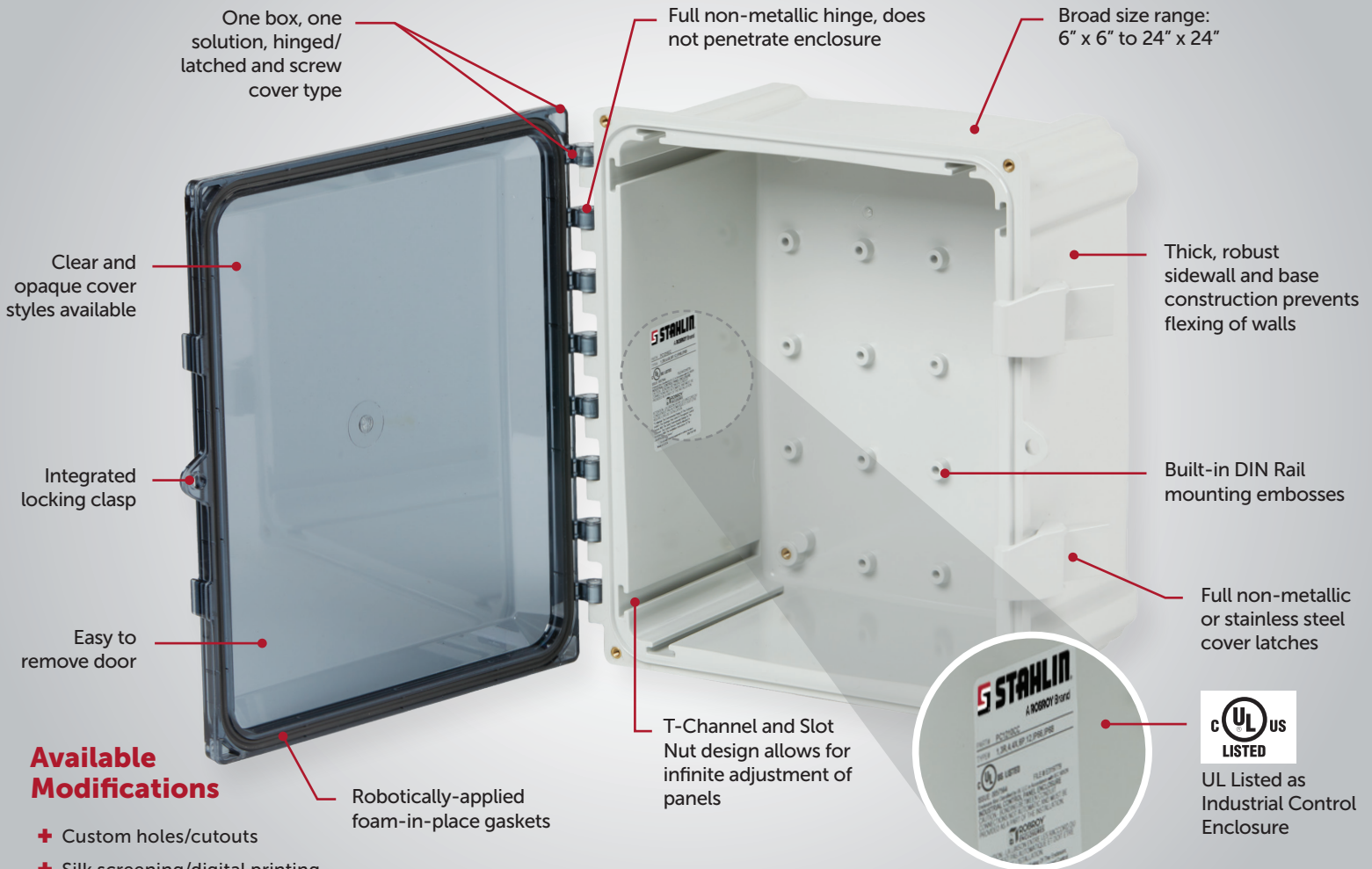
RATINGS AND LISTINGS

- + NEMA 10250, UL 50, UL 50e, UL 508A
- + cULus Listed / CSA Std. C22.2
- + Type 1, 3R, 4, 4X, 6P, 12, as designated*
- + IEC Ingress Rating: IP66, IP68, as designated*
- + Flammability Rating: UL94-5VA
- + Outdoor Exposure UL 746C: (f1) Rated

*NEMA 6P and IP68 on sizes 18 x 16 and smaller. Four screw cover attachment required.

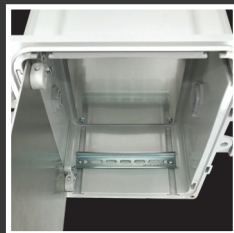
POLYSTAR'S INNOVATIVE FEATURES

Industrial Control Enclosure



UL 94 FLAME RATING - 5VA

PolyStar enclosures provide the highest (most flame retardant) UL 94 rating available



FLEXIBLE OPTIONS

Increases usable space and provides more mounting options:

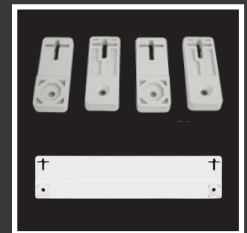
- + DIN rails
- + Back and side panel options
- + Mounting embosses in back
- + Optional weight distribution shelf



PANEL SYSTEMS

Sub-panel mounting solution

- + Revolutionary design
- + Variable height mounting
- + Panel locks into open position
- + Mounting holes are standard JIC



MOUNTING SOLUTIONS

Multi-directional mounting feet or mounting flange included as means of attachment

THE STAHLIN DIFFERENCE

SELECT. MODIFY. DELIVER.

SelectRight™ Program

Stahlin's extensive range of standard polycarbonate enclosures, panels, accessories, and other material options gives you the flexibility to select exactly the right non-metallic enclosures to meet the specific demands of your applications.

- + Broad selection of standard, configurable, off-the-shelf, corrosion-resistant, non-metallic enclosures to meet your applications.
- + Selection of options from available products to meet specification, reduce lead time, and optimize initial costs.
- + Product selections ready to use and available now.

ModRight™ Program

Stahlin's ModRight Program is designed to support you in very uncommon or complex applications. From the basic product through all of its custom/modified required changes, to the moment it arrives on your doorstep for installation into your application, Stahlin ModRight offers standard and custom assistance for your every need. To receive a quotation or further information, visit stahlin.com/modright.

Modifications can be mixed and matched in an endless number of combinations. They can take the form of:

- + Custom cutouts/holes
- + Silk screening
- + Digital printing
- + EMI/RFI shielding
- + Custom mold-in colors
- + Other special requests

DeliverRight™ Program

DeliverRight provides fast service and delivery of products ready to use when and where you need them. Value-add options are available to improve your productivity including direct shipment, bulk packaging, kitting, and custom labeling.

- + Ensures you customer-first service, supply chain, and on-time delivery.
- + A trusted partnership approach from consultation and quotation, to packaging and delivery.
- + U.S.-based manufacturing plus dedicated points of contact help manage orders and delivery.



POLYSTAR® SERIES


ENCLOSURES AND PANELS

POLYSTAR ENCLOSURE WITH NON-METALLIC LATCHES



BACK PANEL, FLANGE, AND SWING PANEL KITS



							
Enclosure Size	Opaque Cover w/ Mounting Feet Part #	Opaque Cover w/ Mounting Feet - No Latches Part #	Clear Cover w/ Mounting Feet Part #	Opaque Cover w/ Mounting Flange Part #	Clear Cover w/ Mounting Flange Part #	Back Panel Part #	Swing Kit Part #
6 x 6 x 4	PC606	PC606HW	PC606CC	PCF606	PCF606CC	BP66***	PC606SPK
8 x 6 x 4	PC806	PC806HW	PC806CC	PCF806	PCF806CC	BP86***	PC806SPK
8 x 8 x 4	PC808	PC808HW	PC808CC	PCF808	PCF808CC	BP88***	PC808SPK
10 x 8 x 4	PC1008	PC1008HW	PC1008CC	PCF1008	PCF1008CC	BP108***	PC1008SPK
10 x 8 x 6	PC100806	PC100806HW	PC100806CC	PCF100806	PCF100806CC	BP108***	PC1008SPK
10 x 10 x 6	PC1010	PC1010HW	PC1010CC	PCF1010	PCF1010CC	BP1010***	PC1010SPK
12 x 10 x 6	PC1210	PC1210HW	PC1210CC	PCF1210	PCF1210CC	BP1210***	PC1210SPK
14 x 12 x 6	PC1412	PC1412HW	PC1412CC	PCF1412	PCF1412CC	BP1412***	PC1412SPK
16 x 14 x 8	PC1614	PC1614HW	PC1614CC	PCF1614	PCF1614CC	BP1614***	PC1614SPK
18 x 16 x 4	PC181604*	n/a**	PC181604CC*	n/a	n/a	BP1816***	n/a
18 x 16 x 10	PC1816	PC1816HW	PC1816CC	PCF1816	PCF1816CC	BP1816***	PC1816SPK
20 x 16 x 8	PC2016	n/a**	PC2016CC	PCF2016	PCF2016CC	BPJ2016***	PC2016SPK
24 x 24 x 10	PC2424*	n/a**	PC2424CC*	PC2424*	PC2424CC*	BP2424PC***	PC2424SPK

*Feature mounting feet or flange molded into the box rather than installed separately.

**For part numbers not shown with HW options, add suffix "HW" to remove latches (4 screws provided) and consult factory for availability.

***Add suffix for material desired: AL = aluminum, CS = carbon steel, ABS = ABS material

POLYSTAR® SERIES



ENCLOSURES AND PANELS

POLYSTAR ENCLOSURE WITH STAINLESS STEEL LATCHES



BACK PANEL AND SWING PANEL KIT



 				
Enclosure Size	Opaque Cover w/ Mounting Feet Part #	Clear Cover w/ Mounting Feet Part #	Back Panel Part #	Swing Kit Part #
6 x 6 x 4	PC606SS	PC606CCSS	BP66*	PC606SPK
8 x 6 x 4	PC806SS	PC806CCSS	BP86*	PC806SPK
8 x 8 x 4	PC808SS	PC808CCSS	BP88*	PC808SPK
10 x 8 x 4	PC1008SS	PC1008CCSS	BP108*	PC1008PK
10 x 8 x 6	PC100806SS	PC100806CCSS	BP108*	PC1008SPK
10 x 10 x 6	PC1010SS	PC1010CCSS	BP1010*	PB1010SPK
12 x 10 x 6	PC1210SS	PC1210CCSS	BP1210*	PC1210SPK
14 x 12 x 6	PC1412SS	PC1412CCSS	BP1412*	PC1412SPK
16 x 14 x 8	PC1614SS	PC1614CCSS	BP1614*	PC1614SPK
18 x 16 x 4	PC181604SS	PC181604CCSS	BP1816*	n/a
18 x 16 x 10	PC1816SS	PC1816CCSS	BP1816*	PC1816SPK
20 x 16 x 8	PC2016SS	PC2016CCSS	BPJ2016*	PC2016SPK
24 x 24 x 10	PC2424SS	PC2424CCSS	BP2424PC*	PC2424SPK

*Add suffix for material desired: AL = aluminum, CS = carbon steel, ABS = ABS material
 Stainless steel latch products are available as standard with mounting feet included.
 To order with a flange, change "PC" prefix to "PCF".

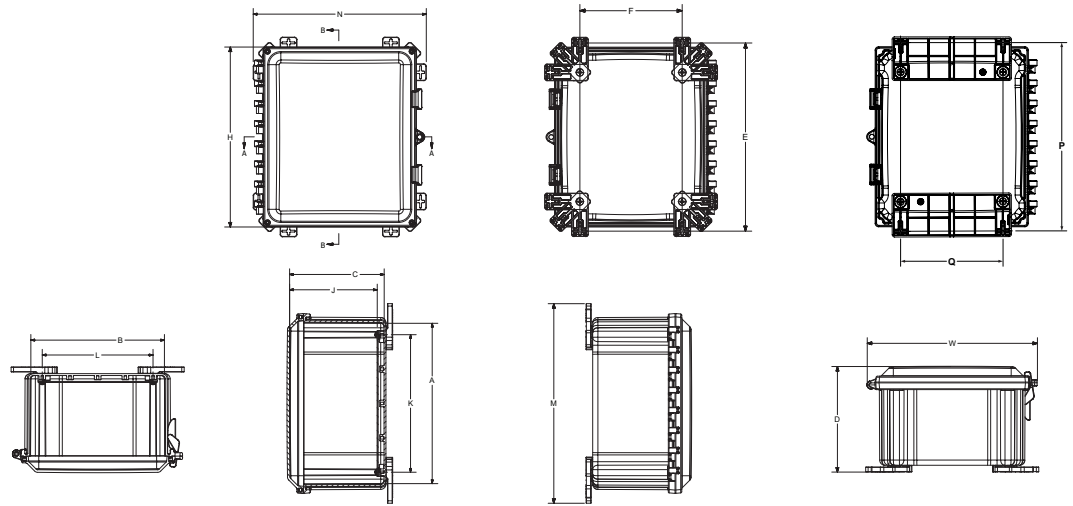
POLYSTAR® SERIES

Screw Size and Torque Table

Product Sizes	Back Panel Screw Size	Back Panel Recommended Torque	Cover Screw Size	Cover Screw Size Recommended Torque	Mounting Foot Screw Size	Mounting Foot Screw Size Recommended Torque	Recommended Mounting Flange Torque
All	#10-32 x 3/8	16-20 in-lbs	#10-32 x 5/8	20-24 in-lbs	1/4-20 x 1/2	10-14 in-lbs	25-30 in-lbs

NOTES:

- + Catalog drawing is for reference only
- + See actual part drawing for specific design
- + Different sizes may have 1, 2, 4, or 6 latches
- + J dimension is with back panel installed
- + Back panel is sold separately



Enclosure Dimensions Table

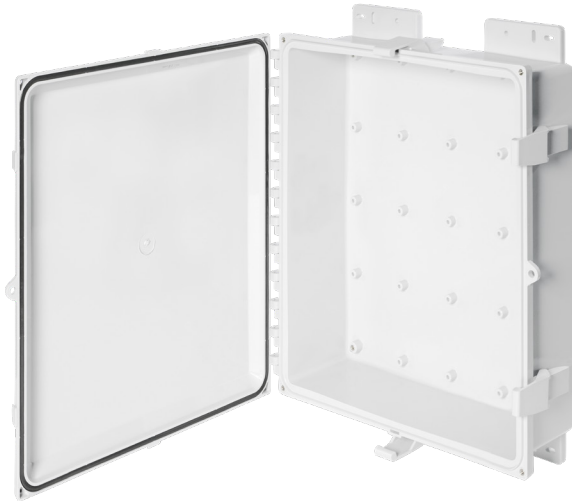
Size ID Number	Overall H x W x D	Inside A x B x C	Mounting Feet Hor. E x F	Mounting Feet Ver. E x F	Mounting Feet 45° E x F	Flange P x Q	J	K	L	M	N
PC606	7.41 x 8.68 x 5.84 (188 x 223 x 148)	5.94 x 5.94 x 5.02 (151 x 151 x 127)	3.64 x 8.40 (93 x 213)	8.03 x 3.64 (204 x 93)	6.75 x 6.74 (171 x 171)	8.03 x 3.64 (204 x 93)	4.50 (114)	4.25 (108)	4.25 (108)	8.89 (226)	8.89 (226)
PC806	9.41 x 8.68 x 5.86 (239 x 223 x 149)	7.97 x 5.97 x 5.07 (202 x 152 x 129)	5.64 x 8.04 (143 x 213)	10.03 x 3.64 (255 x 93)	8.76 x 6.75 (223 x 171)	10.03 x 3.64 (255 x 93)	4.56 (116)	6.25 (159)	4.25 (108)	10.89 (277)	8.89 (226)
PC808	9.41 x 10.68 x 5.86 (239 x 271 x 149)	7.97 x 7.97 x 5.03 (202 x 202 x 128)	5.63 x 10.03 (143 x 255)	10.04 x 5.63 (255 x 143)	8.74 x 8.78 (222 x 223)	10.04 x 5.63 (255 x 143)	4.53 (115)	6.25 (159)	6.25 (159)	10.88 (277)	10.88 (277)
PC1008	11.41 x 10.68 x 6.36 (290 x 271 x 161)	9.96 x 7.96 x 5.57 (253 x 202 x 142)	7.64 x 10.04 (194 x 255)	12.03 x 5.64 (306 x 143)	10.76 x 8.75 (273 x 222)	12.03 x 5.64 (306 x 143)	5.05 (128)	8.25 (210)	6.25 (159)	12.89 (327)	10.89 (277)
PC100806	11.41 x 10.68 x 7.89 (209 x 271 x 200)	9.95 x 7.95 x 7.06 (253 x 202 x 179)	7.63 x 10.03 (194 x 255)	12.04 x 5.63 (306 x 143)	10.76 x 8.75 (273 x 222)	12.04 x 5.63 (306 x 143)	6.54 (166)	8.25 (210)	6.25 (159)	12.88 (327)	10.88 (277)
PC1010	11.41 x 12.68 x 6.97 (209 x 322 x 177)	9.95 x 9.95 x 6.15 (253 x 253 x 156)	7.62 x 12.03 (194 x 306)	12.04 x 7.63 (306 x 194)	10.76 x 10.75 (273 x 273)	12.04 x 7.63 (306 x 194)	5.65 (144)	8.25 (210)	8.25 (210)	12.88 (327)	12.88 (327)
PC1210	13.40 x 12.68 x 7.86 (340 x 322 x 200)	11.95 x 9.95 x 7.07 (304 x 253 x 180)	9.64 x 12.04 (245 x 306)	14.03 x 7.64 (357 x 194)	12.76 x 10.75 (324 x 273)	14.03 x 7.64 (357 x 194)	6.56 (167)	10.25 (260)	8.25 (210)	14.89 (378)	12.89 (327)
PC1412	15.40 x 14.68 x 7.86 (391 x 373 x 200)	13.95 x 11.95 x 7.07 (354 x 304 x 180)	11.64 x 14.04 (296 x 357)	16.03 x 9.64 (407 x 245)	14.76 x 12.75 (375 x 324)	16.03 x 9.64 (407 x 245)	6.56 (167)	12.25 (311)	10.25 (260)	16.89 (429)	14.89 (378)
PC1614	17.65 x 16.68 x 9.98 (448 x 424 x 253)	15.93 x 13.93 x 9.20 (405 x 354 x 234)	13.64 x 16.04 (347 x 407)	18.03 x 11.64 (458 x 296)	16.76 x 14.75 (426 x 375)	18.03 x 11.64 (458 x 296)	8.68 (220)	14.25 (362)	12.25 (311)	18.89 (480)	16.89 (429)
PC1816	19.41 x 18.68 x 11.90 (493 x 474 x 302)	17.83 x 15.83 x 11.08 (453 x 402 x 281)	15.64 x 18.04 (397 x 458)	20.03 x 13.64 (509 x 347)	18.75 x 16.74 (476 x 425)	20.03 x 13.64 (509 x 347)	10.56 (268)	16.25 (413)	14.25 (362)	20.89 (531)	18.89 (480)
PC181604*	19.41 x 18.68 x 5.41 (493 x 474 x 137)	18.16 x 16.16 x 5.08 (4.61 x 410 x 129)	n/a	20.50 x 13.50 (521 x 343)	n/a	n/a	4.56 (116)	16.25 (413)	14.25 (362)	21.75 (552)	n/a
PC2016	21.41 x 18.68 x 9.97 (544 x 474 x 253)	19.86 x 15.86 x 9.15 (504 x 403 x 232)	18.75 x 19.17 (476 x 487)	22.05 x 14.75 (560 x 375)	21.91 x 17.87 (557 x 454)	22.05 x 14.75 (560 x 375)	8.65 (220)	18.25 (464)	14.25 (362)	24.00 (610)	20.02 (509)
PC2424*	25.41 x 26.68 x 11.41 (645 x 678 x 290)	23.91 x 23.91 x 11.88 (607 x 607 x 302)	n/a	n/a	n/a	25.69 x 18.00	10.56 (268)	22.25 (565)	22.25 (565)	26.69 (678)	21.86 (555)

All measurements are in inches; items in parentheses are in millimeters.

*Feature mounting feet or flange molded into the box rather than installed separately.

POLYSLIM™ SERIES

Low-Profile Enclosures



Back panels available in ABS material to optimize wireless signal transmission



Optional ABS back panel



OPTIMIZED DEPTH

Feature

- + Shallow depth design with industry standard height/width eliminates unneeded depth and is ideal for low-profile applications

Benefit

- + Saves space in installation and reduces material cost

ROBUST, SMOOTH SIDE WALLS

Feature

- + Increased fitting mounting space and an aesthetically pleasing appearance

Benefit

- + Long, dependable product life
- + Increases the quantity of fittings which can be installed

FLEXIBILITY

Feature

- + Built-in DIN rail mounting embosses in the back of the enclosure offer an alternative to pack panel mounting
- + Molded-in mounting feet with added mounting cross
- + Available in opaque or clear covers to suit customer application

Benefit

- + DIN rail embosses save time and back panel cost
- + Reduces need for costly on-site modification or adjustments

AESTHETICS

Feature

- + Low-profile design meets customer aesthetic requirements when mounting in visible areas on or inside buildings

Benefit

- + Improved appearance provides a clean look for brand promotion

Enclosure Size	Opaque Cover Catalog #	Opaque Cover - No Latches Catalog #	Clear Cover Catalog #	Opaque Cover w/ Stainless Steel Latches Catalog #	Clear Cover with Stainless Steel Latches Catalog #	Back Panel Part #
10 x 8 x 3	PC100803	PC100803HW	PC100803CC	PC100803SS	PC100803CCSS	BP108**
12 x 10 x 4	PC121004	PC121004HW	PC121004CC	PC121004SS	PC121004CCSS	BP1210**
14 x 12 x 4	PC141204	n/a*	PC141204CC	PC141204SS	PC141204CCSS	BP1412**
16 x 14 x 4	PC161404	n/a*	PC161404CC	PC161404SS	PC161404CCSS	BP1614**
18 x 16 x 4	PC181604	n/a*	PC181604CC	PC181604SS	PC181604CCSS	BP1816**
20 x 16 x 4	PC201604	n/a*	PC201604CC	PC201604SS	PC201604CCSS	BPJ2016**
24 x 24 x 6	PC242406	n/a*	PC242406CC	PC242406SS	PC242406CCSS	BP2424PC**

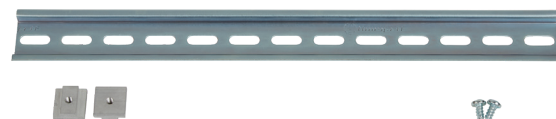
*For part numbers not shown with HW options, add suffix "HW" to remove latches (4 screws provided) and consult factory for availability

**Add suffix for material desired: AL = aluminum, CS = carbon steel, ABS = ABS material

POLYSTAR® SERIES ACCESSORIES

DIN RAIL KITS

DIN Rail Kits			
Catalog #	Fits	Catalog #	Fits
PC6DRK	6"	PC6DR	6"
PC8DRK	8"	PC8DR	8"
PC10DRK	10"	PC10DR	10"
PC12DRK	12"	PC12DR	12"
PC14DRK	14"	PC14DR	14"
PC16DRK	16"	PC16DR	16"
PC18DRK	18"	PC18DR	18"
PC20DRK	20"	PC20DR	20"
PC24DRK	24"	PC24DR	24"



DRK DIN RAIL KIT

DRK part numbers include DIN rail that fits size indicated, plus two custom slot nuts and two screws for mounting to enclosure.



DR DIN RAIL

DR part numbers include DIN rail that fits size indicated, plus two screws for mounting to enclosure.

POLE MOUNT KITS

Pole Mount Kits	
Enclosure Catalog #	Pole Mount Kit Catalog #
PC606	PM6-8
PC806	PM6-8
PC808	PM6-8
PC1008	PM6-8
PC1010	PM10-12
PC1210	PM10-12
PC1412	PM10-12
PC1614	PM14-16
PC1816	PM14-16
PC181604	PM14-16
PC2016	PM14-16
PC2424	PM18-24



- + Stahlin's pole mount kits feature flexible, adjustable mounting straps for mounting enclosures perpendicular to a pole.
- + The kits come with gray powder coated carbon steel top and bottom flanges, stainless steel straps, and mounting hardware.
- + They are simple and easy to install, and they completely eliminate the need to field-fabricate a mounting solution.



POLYSTAR® SERIES INTERIOR MOUNTING SOLUTIONS

WEIGHT DISTRIBUTION SHELVES

APPLICATIONS

- + This innovative weight distribution shelf provides an extremely rugged support system when adding heavy equipment in polycarbonate enclosures.
- + Ideal for support when adding a power supply, battery, or heavy equipment.

BENEFITS

- + Improves installation quality by reducing potential for bottom wall deflection.
- + Reduces risk of enclosure and equipment maintenance and replacement costs due to damage from added weight.

INNOVATIVE FEATURES

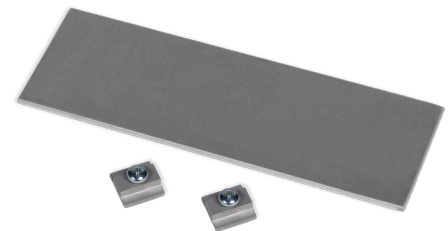
- + Aluminum shelf supported by enclosure side walls reduces risk of deflection of the enclosure bottom wall when subjected to increased weight load.
- + Available in 7 SKUs designed for use with our polycarbonate enclosure sizes from 10" x 10" to 24" x 24".
- + Constructed from strong, lightweight, corrosion resistant aluminum.
- + Available as standalone SKUs or included with our polycarbonate enclosures.*
- + Fastening hardware included.

**When ordered included with the enclosure, shelves are shipped unassembled and included in the enclosure carton.*

Individual Weight Distribution Shelves for Polycarbonate Enclosures

Catalog #	Shelf Width	Shelf Depth	Fits Enclosure Type
WD105	10"	5"	PC1010
WD106	10"	6"	PC1210
WD12	12"	6"	PC1412
WD14	14"	8"	PC1614
WD1610	16"	10"	PC1816
WD168	16"	8"	PC2016
WD24	24"	10"	PC2424

Fastening hardware included



Polycarbonate Enclosure with Weight Distribution Shelf Included in Carton

Catalog #	Polycarbonate Enclosure Dimensions	Shelf Included
PCWD1010	10" x 10" x 6"	WD105
PCWD1210	12" x 10" x 6"	WD106
PCWD1412	14" x 12" x 6"	WD12
PCWD1614	16" x 14" x 8"	WD14
PCWD1816	18" x 16" x 10"	WD1610
PCWD2016	20" x 16" x 8"	WD168
PCWD2424	24" x 24" x 10"	WD24

**Add "CC" to end of catalog # for polycarbonate enclosure with clear cover*



Note: Custom modifications to enclosure and shelf available!

POLYSTAR® SERIES

INTERIOR MOUNTING SOLUTIONS

SIDE PANEL KITS

APPLICATIONS

- + Aluminum side panels allow for mounting of components on enclosure walls, increase mounting space and flexibility, and reduce the need to increase the enclosure size to accommodate additional components—enabling customers to use smaller enclosures in applications requiring tight spacing.

BENEFITS

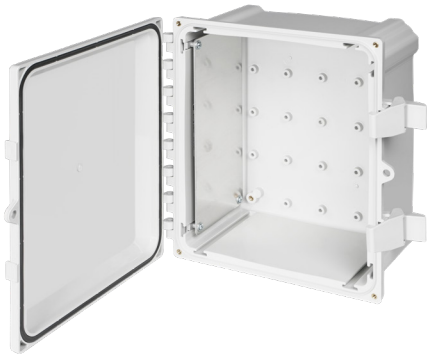
- + Increases customer installation flexibility—equipment can be mounted on multiple sides of the enclosure, in addition to the traditional enclosure back wall.
- + Lowers cost by reducing the need to increase the enclosure size when more mounting space is required.
- + Reduces engineering labor (maintains enclosure mounting footprint).

INNOVATIVE FEATURES

- + Available in 9 SKUs designed for use with our polycarbonate enclosure sizes 6" x 6" to 24" x 24".
- + Corrosion resistant slot nut fastening hardware kit included.
- + Simple and easy installation with the use of common tools—simply install, position, and secure the side panel using the provided slot nuts which fit perfectly in the innovative enclosure T-Slots.

Individual Side Panel Kits for Polycarbonate Enclosures			
Catalog #	Side Panel Size	Fits (Enclosure Long Side)	Fits (Enclosure Short Side)
SP6	6"	PC606	PC806
SP8	8"	PC808	PC808, PC1008
SP10	10"	PC100806, PC1010	PC1010
SP12	12"	PC1210	PC1412
SP14	14"	PC1412	PC1614
SP16	16"	PC1614	PC1816, PC2016
SP18	18"	PC1816	N/A
SP20	20"	PC2016	N/A
SP24	24"	PC2424	N/A

Fastening hardware included



POLYSTAR® SERIES ACCESSORIES

SLOT NUT KIT



SWING PANEL MOUNTS



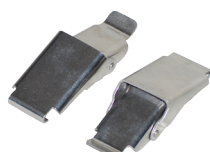
POLYCARBONATE REPLACEMENT LATCH KIT



ACCESSORY KIT



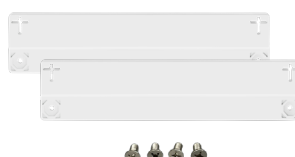
STAINLESS STEEL REPLACEMENT LATCH KIT



POLYCARBONATE VENT



MOUNTING FLANGE KIT



PLUGGIT!



PolyStar Series Accessories

Catalog #	Description	Pieces Included
PCSNK	Slot Nut Kit	Two nuts & two screws
PCSPMK	Swing Panel Mounts	Four per kit
PCLATCHKIT	Polycarbonate Replacement Latch Kit	Two non-metallic latches per kit
PCACCESSORYKIT	Accessory Kit – replacement only	Four mounting feet, cover screws, mounting caps, back panel screws, & washers
PCLATCHKITSS	Stainless Steel Replacement Latch Kit	Two stainless steel latches per kit
REV60	Small Vent (60mm) UL Listed 3R	Mounting nut
REV80	Small Vent (80mm)	Mounting nut
MFK6 MFK8 MFK10 MFK12 MFK14 MFK16	Mounting Flange Kit for Polycarbonate Enclosures (6"-16" wide)	Two polycarbonate mounting flanges, four countersunk screws
REHP SERIES1	Pluggit! Kit – Fits Cutouts for ½", 5/8", ¾" Dia. Hole	Hole plug, gaskets, spacer sleeve
REHP SERIES1.5	Pluggit! Kit – Fits Cutouts for ½" Conduit	Hole plug, gaskets, spacer sleeve
REHP SERIES2	Pluggit! Kit – Fits Cutouts for ½" Conduit, 22mm Push Button, ¾" Conduit, 30mm Push Button	Hole plug, gaskets, spacer sleeve
REHP SERIES3	Pluggit! Kit – Fits Cutouts for 1", 1 ¼" Conduit	Hole plug, gaskets, spacer sleeve
REHP SERIES4	Pluggit! Kit – Fits Cutouts for 1 ½", 2" Conduit	Hole plug, gaskets, spacer sleeve
REHP SERIES5	Pluggit! Kit – Fits Cutouts for 2 ½" Conduit	Hole plug, gaskets, spacer sleeve
REHP SERIES6	Pluggit! Kit – Fits Cutouts for 3" Conduit	Hole plug, gaskets, spacer sleeve
REHP SERIES7	Pluggit! Kit – Fits Cutouts for 3 ½" Conduit	Hole plug, gaskets, spacer sleeve
REHP SERIES8	Pluggit! Kit – Fits Cutouts for 4" Conduit	Hole plug, gaskets, spacer sleeve

SOLARSHIELD™ HMI COVER

HOW IT WORKS



1. Closed **opaque** cover protects HMI screen from damaging UV rays.



2. Twist latch(es) counterclockwise and lift top hinged cover.



3. Open hinged inner doors and rest cover into notches for an easy, hands-free viewing experience.



1. Closed **clear** cover allows excellent visibility of HMI screen.



2. Twist latch(es) counterclockwise and lift top hinged cover for easy access to HMI screen.

APPLICATIONS

- + Extremely tough and durable, **patented** SolarShield HMI Covers are used in both outdoor and indoor applications.
- + Opaque configuration provides superior protection of Human Machine Interface (HMI) screens from the sun. Both Opaque and Clear configurations provide protection from wind-blown dust, water, oils, chemicals, grease, and other environmental conditions.

BENEFITS

- + **Superior Protection:** SolarShield HMI covers protect HMI screens and electrical equipment from corrosion and damage due to UV*, water, oils, dirt, and sand and greatly reduce equipment replacement cost.
- + **Simplicity and Functionality:** Easy to use, hinged design includes supporting inner doors* for hands-free use and better visibility of the HMI screens in the sun.
- + **Strength and Durability:** Impact resistant polycarbonate construction provides long dependable life in harsh conditions.

INNOVATIVE FEATURES

- + Patented design with non-metallic, hinged inner doors* to shield screen from the sun and allow for hands-free use
- + Clear Cover configuration has no inner doors, allowing for excellent visibility of the HMI screen while cover is closed
- + Broad, expanded size selection features options for most standard size HMI screens with dimensions up to 20"W x 14"H
- + NEMA 4/4X
- + Universal covers can be used with either non-metallic or metallic enclosures
- + Lightweight, high-impact rated, UV resistant polycarbonate material construction
- + Stainless steel hardware kit included
- + Padlock-able for increased security
- + Simple and easy installation with the use of common tools
- + Installation instructions and drill template provided
- + Color: Pantone 428C



*Opaque configuration only – select Opaque if UV protection is required. Clear configuration offers protection from environmental conditions and debris while allowing for continual visibility of the screen; no additional UV protection.

SOLARSHIELD™ HMI COVER

MATERIALS

- + **Cover, Base, and Inner Doors:** Polycarbonate with UV inhibitors
- + **Gasket:** Robotically applied foam-in-place seamless polyurethane
- + **Hardware:** Stainless Steel
- + **Twist Latch:** Polyamide

RATINGS AND LISTINGS

- +  per file #E540056: 20" x 14", 16" x 11"
- +  per file #E64358: 10" x 8"
- + UL 508 A
- + NEMA Type 4/4X
- + Operating Temperature Rating:
-40°F to +248°F (-40°C to +120°C)
- + Outdoor UV Exposure (UL 746C) (f1) Rated — UL's best rating; resin has passed test for UV exposure and water immersion

**Maintains NEMA Type 4/4X rating on a Type 4/4X enclosure when a Type 4X HMI Device is installed.*

ORDERING INFORMATION

SolarShield™ HMI Cover Catalog Info			
Catalog Number	Description	Overall H x W x D	Inside H x W x D (Screen Clearance)
HMICVR1008	Opaque HMI Cover	11.41 x 13.13 x 2.50	7.25 x 9.88 x 2.25
HMICVR1008C	Clear HMI Cover	11.41 x 13.13 x 2.50	7.25 x 9.88 x 2.25
HMICVR1611	Opaque HMI Cover	15.72 x 19.10 x 2.59	11.25 x 15.88 x 2.21
HMICVR1611C	Clear HMI Cover	15.72 x 19.10 x 2.59	11.25 x 15.88 x 2.21
HMICVR2014	Opaque HMI Cover	17.98 x 23.07 x 2.59	14.25 x 19.88 x 2.21
HMICVR2014C	Clear HMI Cover	17.98 x 23.07 x 2.59	14.25 x 19.88 x 2.21

SolarShield™ HMI Cover Compatibility		
	Smallest Compatible Enclosure Size	
HMI Cover	PolyStar®	PolySlim™
HMICVR1008	PC1412	PC141204
HMICVR1008C	PC1412	PC141204
HMICVR1611	PC2424	PC242406
HMICVR1611C	PC2424	PC242406
HMICVR2014	PC2424	PC242406
HMICVR2014C	PC2424	PC242406

OTHER POLYCARBONATE ENCLOSURES

PUSHBUTTON SERIES

UL Listed File #E362920, IP66 IP68

UL Listed File #E64358 Type 1, 3R, 4X, 6P, 12

PushButton Series			
Catalog #	Holes	Hole Size	Overall H x W x D
CFPC1PB	1	1.20 (30)	4.34 X 3.16 X 2.79 (110 X 80 X 71)
CFPC2PB	2	1.20 (30)	5.12 X 3.16 X 3.54 (130 X 80 X 90)
CFPC1PB22	1	0.89 (22)	4.34 X 3.16 X 2.79 (110 X 80 X 71)
CFPC2PB22	2	0.89 (22)	5.12 X 3.16 X 3.54 (130 X 80 X 90)



SAFETY YELLOW PUSHBUTTON SERIES

UL Listed File #E362920, IP66, IP68

UL Listed File #E64358 Type 1, 3R, 4X, 6P, 12

Safety Yellow PushButton Series			
Catalog #	Holes	Hole Size	Overall H x W x D
YW-CFPC1PB	1	1.20 (30)	4.34 X 3.16 X 2.79 (110 X 80 X 71)
YW-CFPC2PB	2	1.20 (30)	5.12 X 3.16 X 3.54 (130 X 80 X 90)
YW-CFPC1PB22	1	0.89 (22)	4.34 X 3.16 X 2.79 (110 X 80 X 71)
YW-CFPC2PB22	2	0.89 (22)	5.12 X 3.16 X 3.54 (130 X 80 X 90)



CF SERIES POLYCARBONATE

UL Listed File #E362920, IP66 IP68

UL Listed File #E64358 Type 1, 3R, 4X, 6P, 12

PushButton Series			
Catalog #	Holes	Overall H x W x D	Inside A x B x C
CFPC432	Blank	4.34 X 3.16 X 2.79 (110 X 80 X 71)	3.92 X 2.74 X 2.51 (100 X 70 X 64)
CFPC533	Blank	5.12 X 3.16 X 3.54 (130 X 80 X 90)	7.71 X 2.74 X 3.26 (130 X 80 X 90)



All measurements are in inches - items in parentheses are in millimeters.

MADE IN THE USA

©2024 Stahlin® | ALL RIGHTS RESERVED.

Version 3, revised 12/26/2024

500 Maple Street
Belding, MI 48809

O: (616) 794-0700
E: csr@robroyenclosures.com

stahlin.com

S STAHLIN
A **ROBROY** Brand